



PEEL
ART GALLERY
MUSEUM +
ARCHIVES

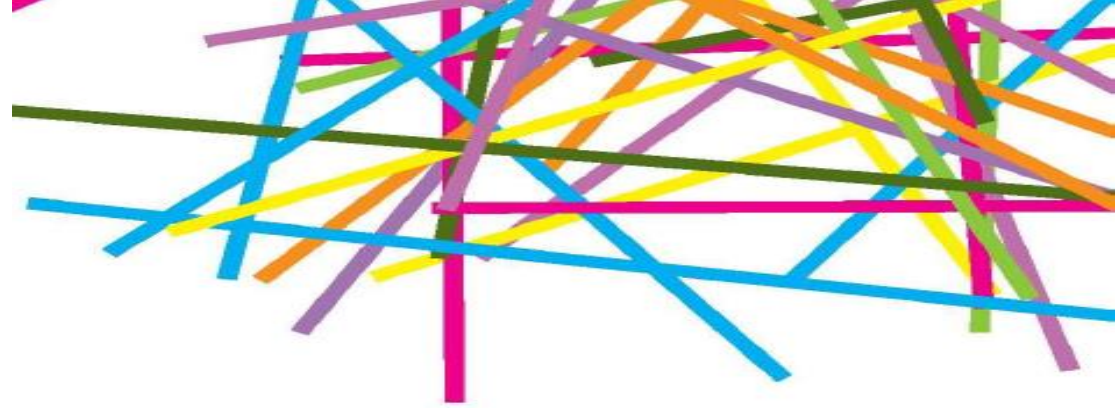


Museum Memories: Virtual Exhibitions

Welcome

We hope that you will be able to use these resources put together by the Peel Art Gallery, Museum and Archives (PAMA) to engage in meaningful conversations with residents. In this package, you will find links to PAMA's virtual exhibitions with suggested conversation points and activities.





Virtual Exhibitions

Visit an exhibition from anywhere! A variety of PAMA exhibitions now live online. The following slides will include the link to the virtual exhibition and some suggested discussion points. Pick your favourite or visit them all, the resource guide is yours to use as you'd like.



Art Voice: Expressions from Youth in Peel

- Explore diverse, extraordinary works created by youth artists expressing their voices through their art. [Take a tour through the exhibition here.](#)
- There are many scenes of nature, including birds, plants and landscapes.

Questions for discussion

- Which artwork is your favourite?
- What colours do you like?

The next few slides will look at some of the paintings from Art Voice.

Aasimah Hossain, Lotus



Gerard Haddad, Untitled

What does this painting remind you of?
Can you remember a time when you were on a
boat?



Rand Salamkhan, Sunset Vibes

Do you like the colours in this painting?

Do you enjoy watching the sunset?



Lauren Elizabeth Aldridge, Be Not Afraid of Going Slowly Series

Have you seen a panda before?
What is your favourite animal?



Why do you think the
cat is blue?

Have you ever had a
cat?

Rachel Walinga, Blue Cat

SIMON HUGHES

The logo features two overlapping triangles, one green and one blue, positioned to the left of the text. The word 'WORKS' is in a light grey font, and '2001-2020' is in a slightly larger light grey font below it.

WORKS
2001-2020

- Explore the work of Winnipeg artist Simon Hughes. Both familiar and strange, his interior scenes of artist studios, whimsical architectural structures, rural-and-cityscapes, iceberg and mountain views tend to borrow something from reality but in the end represent a window into the imaginative and the mysterious. [Take a tour through the exhibition here.](#)

Questions for discussion

- What do you like about the artwork?
- Do you have a favourite work in the exhibition?

The next few slides will look at some of the paintings and videos from Simon Hughes.



Simon Hughes, Canadian (1973-)
Coronal Mass Ejection, 2013
Oil and acrylic on linen
198.12 x 243.84 cm (78 x 96 in)
Collection of Dana and Shaun Mayberry

What do you see in this painting? Does it remind you of anything?



A one-minute look at the art of Simon Hughes, featuring PAMA Curator, Art Sharona Adamowicz-Clements. Click [here](#) to watch the video on YouTube.



A one-minute video with artist Simon Hughes talking about his art and music.
Click [here](#) to watch the video on YouTube.

Morphology

- Local photographers document the creation of the Jim Tovey Lakeview Conservation Area, a 26-hectare project on the Lake Ontario shoreline. Their artistic visions give new life to the ongoing construction of a coastal wetland, transforming rock and rubble into a green oasis. [Take a tour through the exhibition here.](#)

Questions for discussion

- Have you visited conservation areas before?

The next few slides will look at some of the images from Morphology.





Marcelo Pazan

What do you think about when you see a construction site?



Pamela Bell

Do you like the colours of the sky?
What is your favourite sunset memory?



Gabriella Bank

What are your favourite types of flowers?
Do you like the smell of flowers?



Let's finish with some music! Here is a video of the Brampton Folk Club singing traditional jigs at PAMA.

Click [here](#) to watch and listen to the video on YouTube.



Thank you for visiting PAMA's
virtual exhibitions.