

PEEL  
ART GALLERY  
MUSEUM +  
ARCHIVES



# 2015 YEAR IN REVIEW

# MESSAGE FROM THE MANAGER AND BOARD CHAIR

Cultural institutions infuse our communities with vitality. They inspire and resonate with individuals; they nurture creativity, and contribute to both quality of life and economic development. In 2015, the Peel Art Gallery, Museum and Archives (PAMA) worked with community partners, peers in other organizations and our volunteers to meet our goal of contributing to a cohesive community.

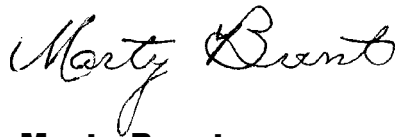
Our 2015 accomplishments included increasing access to Peel's culture and heritage through community engagement, reaching new audiences through groundbreaking exhibitions and partnerships, and improving services and amenities. PAMA's progress demonstrates the strong growth and powerful results of community engagement efforts through extremely successful initiatives such as Sikh Heritage Month and our participation with the national Culture Days initiative.

Looking ahead, PAMA staff and volunteers will be working towards attracting new audiences, seeking community input in planning, enhancing program development, strengthening and building partnerships, and continuing our stewardship of Peel's cultural heritage. Behind the scenes, staff will be working towards strategic plans for our collections, planning exhibitions that integrate our collections, connecting with community interests and increasing our marketing to ensure everyone is aware of PAMA.

We would not be able to accomplish our goals without the support of our stakeholders, donors, members, volunteers and community partners.

You are part of a vital group of individuals who contribute time, finances, community connections and most importantly your passion to ensure that the Peel Art Gallery, Museum and Archives is a success.

Thank you for your dedication in making PAMA an integral part of the community and a vibrant organization that celebrates culture and heritage.



**Marty Brent**

Manager, Peel Art Gallery,  
Museum and Archives



**Charles Scott**

Chair, Friends of PAMA

# CULTURE AND HERITAGE MATTER!

Over the past year, PAMA established a solid reputation as a leading cultural institution offering engaging and ground-breaking exhibitions and visitor experiences.



The Wm. Perkins Bull Reading Room hosts Archives exhibitions throughout the year.



Artifact discovery with visitors during Culture Days in September 2015.

## In 2015, PAMA...

- Offered 'free days' including Family Day and Culture Days
- Invited special guests to help celebrate March Break with the community including the Toronto International Film Festival, Kendrum Music Academy, Credit Valley Conservation Authority, and Speaking of Wildlife. Each day had a special event along with a PAMA Fun Family Activity and drew 812 visitors
- Introduced the Family Art and Yoga program
- Celebrated Family Literacy Day, in partnership with the Brampton Library and Region of Peel Early Literacy Specialists, to create engaging programs for families centered on art and literacy
- Hosted PAMA Kids Summer including three weeks of camp and three weeks of drop-in Summer Staycation activities
- Hosted talks and artist led workshops for the community. Popular speakers included: artists Olex Wlasenko, Stephanie Rayner, Lizz Aston and Linda Martinello
- Partnered with the Toronto Region and Conservation Authority and the Credit Valley Conservation Authority to introduce workshops and tours to compliment the exhibition *Our Feathered Friends*
- *Concerts in Chambers* featured music from World War I and early folk music

# PAMA MANDATE

The Peel Art Gallery, Museum and Archives exists to share the story of Peel by providing diverse opportunities for creative exploration and discussion to help build cohesive communities.

## COMMUNITY ENGAGEMENT

PAMA continues to work towards being a leader in community collaboration and engagement in the Ontario cultural community. With a focus on diversity and inclusion, PAMA actively builds strategic partnerships through innovative grassroots collaborative ventures that help create understanding and cohesion.

- Sikh Heritage Month at PAMA exemplifies community building at its best. In partnership with the Sikh community, PAMA and nine partner groups produced *Spirit of the Sikhs*, a celebration featuring vibrant events and exhibits. The partnership increased our reach to communities across Peel. Record-breaking attendance of over 4,500 people in April 2015 reflects program success. This award-winning collaboration was recognized by the Ontario Gudwaras Committee and the Ontario Museum Association.



4 Creative community projects and events like Family Day help PAMA contribute to cohesive communities.

## HEALTH OF THE COMMUNITY

Culture and heritage make important contributions to the economic health of a community. Throughout the year, PAMA partners with individuals, government and business partners to provide a hub for citizen engagement.

- From providing family memberships and free admission passes to events, PAMA gives back to the community. Further, PAMA engaged the online community during Giving Tuesday in December. Our projects over the past two years have raised funds to bring deserving classes on a school field trip to PAMA to experience learning outside the classroom.



Community participants discuss their vision of Peel Region in the Historic Peel County Courthouse at PAMA.



## CONNECTING WITH YOU

PAMA strives to create an environment that fosters connectivity and sparks dialogue in a safe and accepting atmosphere

- PAMA hosted *Can You Imagine?* which engaged visitors in the Region of Peel's strategic vision to 2035. Attracting over 4,300 visitors, this initiative creatively engaged and captured residents' input on what they value and what they envision for the future of Peel. From transportation, housing, and anti-poverty initiatives to creativity; citizens had the opportunity to play, draw, record, discuss and share their opinions.



Knit@PAMA scarf donations for local shelters.

## BUILDING A COMMUNITY

PAMA actively engages in community building on many levels, with a focus on inclusion and accessibility.

- Over the past year, we held a number of programs that contributed to the health and vitality of the community, including: drumming circles by our partners from the Peel Aboriginal Network, knit@PAMA

knitters who donated their creations to various shelters in Peel, exhibitions on social issues such as homelessness, partnering with Credit Valley Conservation Authority on joint projects, and lending and borrowing exhibitions and collections between Mississauga, Brampton, and Caledon.

## VISITOR ENGAGEMENT

Visitor engagement plays a key role in the program development at PAMA. We strive to create programs and exhibitions that will keep the community engaged and connected to culture and heritage.

- We know that over 80 per cent of visitors are pleased with their experience. PAMA receives high marks for service such as staff support and enjoyable experience. With word of mouth as the most trusted form of endorsement, we are thrilled that visitors express a strong interest in return visits and recommend PAMA to family and friends.



Community collectors and audiences came together to celebrate a one day exhibition of rare Sikh coins in April 2015.

# EXHIBITIONS



Artist Stephanie Rayner with visitors at the opening of her exhibition *Boat of Eternal Return* in the fall of 2015.

## ART GALLERY

In 2015, PAMA's art gallery presented a wide-ranging exhibition program that comprised community-based projects, regional art and nationally important subjects. Our program also highlighted the great depth of PAMA's permanent art collection.

An exciting year of programming in the art gallery got off to a wonderful start with the continuation of *Transform, Distort, Warp, and Explode!* a survey of work by Lizz Aston. This exhibition was followed by a dynamic, engaging selection of works on paper drawn from the gallery's permanent collection entitled *Exchange: PAMA Staff Selects*. Featured artists included: Carl Beam, Christiane Pflug, Harold Klunder, Robert Motherwell, David Bolduc and Frank and Caroline Armington.

To accompany this presentation was a similarly themed "exchange" exhibition, but with a difference. We invited a group of artists to select a painting, drawing, print or sculpture

from our collection and then to describe why they selected their work of art. The results were often unexpected, while opening up new avenues of creative inquiry for both the collection-related piece and the artists' own thought processes.

Similarly, the main summer exhibition featured a "conversation" between two different art gallery collections. We teamed up with our colleagues at Halton Hills' Helson Gallery to present an exhibition featuring selections from PAMA's and Helson's permanent collections. The ensuing dialogue between the many pieces revealed much about the similarities and differences in the collecting tastes of a private collector and a public art gallery.

The summer exhibitions gave much to marvel at and enjoy while taking an imaginative trip back in time. The outstanding suite of portrait prints by Montreal artist Stanley Lewis introduced the theme of "timelessness"; also the animating principle behind Olex Wlasenko's lyrical and evocative large-format charcoal drawings comprised in his "Long Moments" exhibition. Olex based this exhibition on his re-presenting scenes from black and white films from the mid-twentieth century.

Over the fall, PAMA was very proud to be the hosting venue for the inaugural presentation of former Peel-based artist Stephanie Rayner's extraordinary and complex sculptural installation, "Boat of Eternal Return." This multi-faceted and multi-sensory installation touched on how history – both personal and collective – resonates in the present, and how spirituality and personal biography can

be expressed in an object whose meaning touches upon the mythic qualities of the repeating life cycles. Rounding out the year were collections exhibitions that explored points of inspiration, and which looked in-depth at the works on paper by the historical Canadian artist, York Wilson.

In all, it was a year of art that blended the local and personal with the regional, national and international trends of artmaking.

### 2015 Art Exhibitions

Transform, Distort, Warp, Explode! A survey of work by Lizz Aston  
October 18, 2014 to January 18, 2015

Exchange: PAMA Artists Select  
February 1 to May 24, 2015

Long Moments: New Work by Olex Wlaskenko  
June 14 to October 18, 2015

In Conversation: The Art Collections of PAMA and the Helson Gallery  
July 5 to September 14, 2015

Stephanie Rayner: Boat of Eternal Return  
September 26, 2015 to January 10, 2016

Point of Inspiration  
October 4, 2015 to January 17, 2016

### Art Gallery Permanent Collection Exhibitions:

Pulling the Thread  
October 18 to January 25, 2015

Exchange: PAMA Staff Selects  
February 1 to May 24, 2015

Timeless Creations: Prints by Stanley Lewis  
June 5 to September 20, 2015

Portraits: Moments in Time, Selections from PAMA's Collection  
July 5 to September 20, 2015

Point of Inspiration: Multi-media Works by York Wilson  
October 4, 2015 to January 17, 2016



Visitors explore *Our Feathered Friends* exhibition on loan from the Canadian Museum of Nature

### MUSEUM

In early 2015, *Our Feathered Friends*, on loan from the Canadian Museum of Nature, flew in to introduce visitors to the sights and sounds of some of Canada's most beautiful birds.

We asked visitors what they thought the PAMA Museum should collect in the exhibit *PAMA Museum Collects: Past, Present, Future*. The hundreds of answers we received will allow us to create interesting exhibits in the future, and ensure that we are collecting objects that help tell the story of Peel's past.

PAMA installed exhibitions throughout the community in 2015. *Calling Peel* at the Caledon Town Hall, and *Capturing Peel: Cameras and Images from the PAMA Collection* at Queen's Park shared PAMA's collections with a broader audience. We were honoured to be a part of the Aboriginal Pavilion of the Pan Am Games with *Spirit Seeds: A Celebration of First Nations Beadwork*, installed at the Native Canadian Centre of Toronto.

In April, an incredible array of exhibitions helped PAMA celebrate Sikh Heritage Month. Artifacts and artwork from the community showcased the

# EXHIBITIONS

rich history and culture of Peel's Sikh population. We had the privilege of working with many organizations in Peel who work tirelessly to help the homeless and those at risk in our Region. The exhibit, *Through Our Eyes: Homeless in Peel* gave a voice to people struggling with homelessness by showcasing their provocative artwork, and subsequently helping raise awareness of this issue in the community.

PAMA's permanent exhibitions continue to inspire visitors. The We Are Here gallery focuses on the story of Aboriginal people in Peel, while other exhibitions highlight Peel's agricultural and industrial past. Artifacts from the Museum collection, images and documents from the Archives, and interactive opportunities provide visitors with an excellent introduction to the history of Peel.

The year ended on a warm and cozy note with *Stitched Together: The Art and Warmth of Quilts*. PAMA's entire quilt collection was on display for visitors to explore the beautiful patterns and materials, and to learn more about the stories of the people who designed, made and used them.



Visitors of all ages explore, connect and engage with exhibitions at PAMA.

## 2015 History Exhibitions

The Guardian: The Early Years  
September 2014 to February 2015

Waist Management: A History of Unmentionables  
On loan from the Fashion History Museum  
November 2, 2014 to March 1, 2015

Peel Collects: Dolls From Around The World  
November 15, 2014 to January 25, 2015

Our Feathered Friends  
On loan from the Canadian Museum of Nature  
March 1 to May 31, 2015

Winding Lane Bird Sanctuary – The Records of Roy Ivor and Bernice Inman Emery  
March to June 2015

PAMA Museum Collects: Past, Present, Future  
March 14, 2015 to March 1, 2016

Sikh Heritage Month exhibitions  
April 1 to 30, 2015

Sports  
May 6, 2015 to January 24, 2016

Ontario's Sporting Past  
On loan from the Archives of Ontario  
May 6 to June 12, 2015

Wish You Were Here... – Souvenir Postcards from Peel  
June – August 2015

Peel in 2035: Can You Imagine?  
July 18 to September 6, 2015

What Kids Wore: Children's Clothing  
from the Collection  
September 10, 2015 to January 24, 2016

Mapping Peel: An Exploration of Maps from the Peel Archives, 1805-2013  
September to November 2015

Through Our Eyes: Homeless in Peel  
October 8, 2015 to January 17, 2016

Stitched Together: The Art and Warmth of Quilts  
November 1, 2015 to February 16, 2016

Unbuilt Peel: What Could Have Been  
December 2015 to April 2016.



# ARCHIVES PROGRAM

The Archives is the official repository for the archival records of the Region of Peel, also the municipalities of Mississauga, Brampton and Caledon. Government records include council and committee minutes and reports, bylaws and property assessment rolls. The Archives also acquires and conserves records of individuals, families and organizations that have made a significant contribution to our understanding of the people who have lived, worked or had an impact on Peel. The Archives maintains a public reading room to support researchers wanting to access our holdings.

At the end of May 2015, Diane Allengame retired after 30 years at the Region. The archival program owes a tremendous debt to Diane's leadership, dedication, and skill. She professionally and passionately ensured the survival of the documentary heritage of the entire area, and went to great lengths to make the collection usable and known. Over her career at the Region, Diane provided continuity and an organizational memory that ensured the program's success. We are pleased that Jim Leonard joined the team in July 2015 as the Regional Archivist and Supervisor of Archival Services.

The Archives continues to manage increasing demand for its reference services with archivists assisting 1,900 researchers and completing nearly 2,700 retrievals from our holdings. To assist with the processing of records, and to encourage the development of young professionals, the archives hosted two students over the summer. Kristen Young worked on the processing and description of incoming government and non-government records and Alesha Grummett-Roesch processed the Ken Hay photographic fonds.



Archives staff processing incoming municipal government records.

In 2015, the Archives increased their use of social media to share information about our archival holdings, programs and services. The Peel Archives blog was launched in 2015 and spotlights records under our care while also explaining what archives do and why. Through social media we continue to highlight material from the collection and participate in interactive events such as: **#askanarchivist**.

Community engagement continued with archives staff providing talks on a range of subjects for groups such as: the Caledon East Probus Club, and a curator's talk featuring animated maps from the Perkins Bull fonds. The Archives participated in the production of a series of short videos on archives for the *Ontario Elementary Social Studies Teachers Association* (OESSTA).

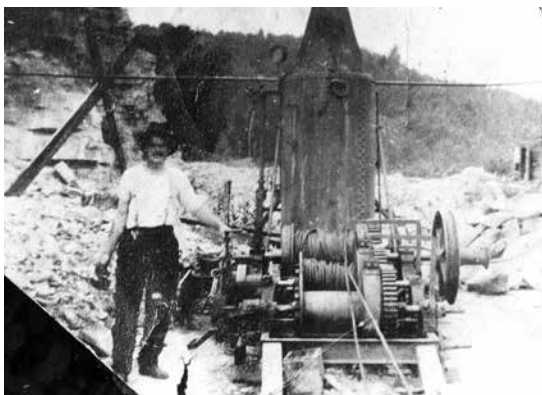
# ACQUISITION HIGHLIGHTS

PAMA's collection is held in trust for the people of Peel. Our heritage buildings enhance the sense of place and pride in the community and through the generosity of in-kind donors and a purchase program supported by monetary donations, PAMA continues to build the archives, art and museum collections.

## ARCHIVAL RECORDS

The Archives holdings continued to grow through the year with acquisitions ranging in size from a single postcard to hundreds of boxes of records. Staff processed 113 acquisitions in 2015.

Some significant groupings of government records that were transferred to the Archives in 2015 included, 204 boxes of Region of Peel Council and Committee records from 1973 to 2008. These records, which can contain agendas, meeting minutes, resolutions, reports, memos, and presentation packages, serve to document, in detail, the activities of the Regional municipal government. They are vital records when seeking to understand why and how the Region delivers programs and services to 1.4 million residents.



10 Photograph of the Big Hill Quarry (Brimstone, Caledon) with an aerial tram engine from 1890 from the Paul Caulfield fonds.



Photograph of George Gordon holding a bee swarm.

The Archives also acquired important non-government records that were created by organizations, families, and individuals. Some significant additions include:

- Gordon family fonds (Port Credit)
- Macdonald family fonds (blacksmiths and mechanics in Tullamore)
- Brampton Arts Council fonds
- Chinguacousy Health Services Board fonds
- A collection of photographs documenting the Cataract and Forks of the Credit areas in Caledon
- Records documenting the Peel County Library Cooperative
- Bolton Enterprise newspapers
- Streetsville newspaper (1897) – extremely rare



Child's letter from the George W. Gordon Family fonds.



Queen Victoria tobacco pipe from about 1905. Gift of Paul Hamilton.

## WORKS OF ART

The history of PAMA's art collection is rooted in the acquisition of art works through in-kind donations. The generosity of 16 individuals who donated 193 art works in 2015 continues the legacy of building this outstanding cultural treasure.

Donations spanned the decades from the 1950s onwards and helped support the foundation of the art collection. This year's donations included works in a variety of media including prints, drawings, paintings, photographs and three dimensional mixed media works.

Of the donations to the art collection this year, 180 works were added to the works on paper collection, a special focus for the PAMA art collection; with new works including prints, drawings and paintings on paper. Thirteen of the new acquisitions this year were created by artists who were not previously represented in the collection, such as Patterson Ewen, Phyllis Janes and Harold Feist. Five artists who have a Peel connection, including David Urban, Adrian Dingle, Gordon Rayner, Graham Coughtry and Ron Bloore were also added to the collection.

Once again, PAMA's art collection benefitted from the on-going commitment of long time art donors Moshe Dobner, Richard Leibtag, Ron and Tabita Moore, June and Jim Revine, and Al and Simmie Rain. Joining our long time donors in 2015 were four first time donors. Our thanks to all the donors who contributed to the building of an amazing collection of art for the residents of Peel.



Jiri Ladocha Silver Rain c. 1998. Graphite, watercolour with silver leaf on paper. Gift of Moshe Dobner © the Artist.

## ARTIFACTS

In 2015, the number of PAMA Museum acquisitions was almost double the previous year. The 163 artifact donations will help the museum to tell stories of Peel, spanning the entire Region and across history. Of particular note were two large donations that highlight Peel's South Asian community, including a wedding sari worn by two generations of brides.

The diversity of artifacts donated is also impressive:

- A box of Arrow jet fighter hardware from A.V. Roe Aircraft in Malton
- Tools used in a 19th century blacksmith shop from Toronto Gore Township
- A mascot costume used to celebrate the millennium in 2000
- A commercial dough mixing bowl from a Caledon bakery
- Sewing and knitting items used Brampton quilter by Annie May Johnston

The foresight and generosity of all the 2015 museum collection donors, which include two organizations and thirty individuals, will help us to highlight many aspects of Peel's story for future generations.



A painted cast metal decoration featuring an aspect of a Hindu goddess. Gift of Mr. and Mrs. Mukherjee.

# PROGRAMS

Public and school programs at PAMA encourage, engage and enhance arts, heritage and culture for people aged 1 to 100+. Experiences are made all the more vital by providing the public with the opportunity to explore artifacts, documents, exhibitions at PAMA and creating a space for creativity and interaction.

## School Programs

School programs enhance the provincial curriculum and help to build future audiences. With PAMA collections and exhibitions as inspiration, school programs encourage students to engage, explore and connect using a 'Me to the World' approach. In 2015, PAMA delivered engaging, hands-on programs to 7,117 students.

Visiting students often return to PAMA to share their experiences with their families. Museum visitor studies confirms that those who visit museums and art galleries with their families are more likely to become visitors in the future.



Learning about art and music at Culture Days.



Visitors get their art supplies from the Art Vending Machine as part of the *Can You Imagine* exhibition.

## Programs for the Public

PAMA education services provided a number of public and registered programs in 2015. From drop-in activities to lectures to registered classes, PAMA provides rich opportunities to connect to exhibitions, collections, arts and heritage on a personal and in-depth level.

PAMA educators provided themed presentations to 3,294 seniors in Long Term Care and Retirement residences across Peel Region. Our Museum Memories and Young at Heart programs offered participants the chance to come together and share stories while enjoying an art workshop or an object based presentation.

With generous funding from the Brampton and Caledon Community Foundation, 425 youth and adults experienced our Creative Expressions workshops. Designed for participants with special needs, the program allows people to develop skills and confidence through making art.



# COMMUNITY CONNECTIONS

Partnering with the community allows PAMA to bring new ideas and engage visitors differently.

In 2015, our collaboration with the Sikh Heritage Month Committee allowed PAMA visitors an opportunity to experience *The Spirit of Sikhs* through art and history exhibitions, performances and interactive demonstrations. PAMA hosted an entire month of special events and activities, open to all visitors, that featured lectures, yoga, nutrition classes, music, poetry and much more. From the opening ceremony, to a one day exhibition featuring a rare private coin collection, to film night, several lectures, art exhibitions and the closing celebrations, Sikh Heritage Month was a truly remarkable experience. Our PAMA byline “Your Story. Here,” was brought to life with the help of the Sikh community.

The PAMA membership program continues to grow and provide benefits to our members. Membership funds help support a number of free admission days including Family Day and Culture Days. Additionally, they fund popular seniors outreach programs, *Museum Memories – Reminiscing for Seniors and Young at HeArt*; programs that bring PAMA collections to those living in seniors residences and assisted living centres.



Opening celebrations of Sikh Heritage Month and PAMA.



2015 brought many distinguished visitors to PAMA including our future Prime Minister Justine Trudeau. Local politicians were on hand to visit the Sikh Heritage Month exhibition with Mr. Trudeau.

In addition to supporting PAMA, there are benefits to being a member: free admission, discounts in the PAMA store, programs and facility rentals, as well as, invitations to openings and special events.

## Exhibitions in the community

Calling Peel  
Caledon Town Hall  
May 13 to June 29, 2015

Spirit Seeds: A Celebration of First Nations  
Beadwork, Native Canadian Centre of Toronto;  
part of Aboriginal Pavilion held during the Pan Am Games  
July 10 to 26, 2015

Capturing Peel: Cameras and Images from the  
PAMA Collection, Legislative Assembly of Ontario  
at Queen's Park, Toronto  
July 22 to November 23, 2015

# COMMUNITY CONNECTIONS

## VOLUNTEERS

PAMA benefits from the passion and generosity of its volunteers in numerous ways. Volunteers donate time while participating in a range of projects; from assisting the public in the archives, researching collections, helping behind the scenes with collections and being a friendly face during special events such as Culture Days and The Farmers Market. PAMA could not function without their support.

In 2015, we had 2,961 volunteer hours logged by almost 50 volunteers. We have increased the number of volunteer hours by 461 and have nine more volunteers than we did last year. Our volunteers have contributed an average of 60 hours per week to PAMA – almost the same hours as two full-time positions! To recognize such dedication, PAMA puts the names of volunteers forward for recognition throughout the year.

In 2015, Advisory Board Chair Chuck Scott was the recipient of the Region of Peel's Julie Di Girolamo Volunteerism Award. A dedicated, articulate, passionate PAMA volunteer and long serving member and Chair of Friends of PAMA Advisory Board, Chuck has helped guide and support PAMA through exceptional times. We were thrilled to have the Region recognize him for his exceptional service!

To each and everyone one of you, we express our sincere thanks!



A dedicated museum and community volunteer, Paul Willoughby was recognized for his valuable contributions to preserving history and heritage in his community.



Chuck Scott (2nd from the left) received the award from Region of Peel staff who support PAMA; Karla Hale Director of Service Innovation, Gilbert Sabat Commissioner of Service Innovation and Information Technology and PAMA Manager Marty Brent.

# PARTNERS

PAMA works with many community groups, organizations and individuals to plan exhibitions, education initiatives, public programs and to connect to the community. Our thanks to all of our community partners.

Archives of Ontario  
Art Gallery of Mississauga  
Art Gallery of Sudbury  
Beaux Arts Brampton  
Brampton Public Library System  
Caledon Library System  
Canadian Museum of Nature  
City of Brampton  
The Bridge Prison Ministry  
City of Mississauga  
Community Health Initiatives team,  
Region of Peel Health Services  
The Dam  
Elizabeth Fry Society of Peel-Halton  
Julie Fitzsimmons  
Sophia Graham  
Goan Archives Canada  
Halton Regional Museum  
Heritage Mississauga  
Heritage, Arts, Culture and Entertainment  
Working Group (HACE)  
Historic Bovaird House  
Human Services, Region of Peel  
Knights Table  
Integrated Planning Division – Corporate  
Services Department, Region of Peel  
Royal Canadian Legion, Major William Dwight  
Sharpe Branch 15  
Lorne Scots (Peel, Dufferin and Halton  
Regiment)

Lorne Scots Regimental Museum  
McMaster University School of the Arts  
Museums of Mississauga  
Native Canadian Centre of Toronto  
Our Place Peel  
Peel Aboriginal Network (PAN)  
Peel Black Network, Region of Peel  
Peel District School Board  
Peel Police  
The Perkins Bull Collection  
Regeneration Outreach Community  
Regional Diversity Roundtable  
Royal Ontario Museum  
Sandalwood Park Nursing Home  
SharED  
Sikh Foundation of Canada  
Sikh Heritage Month Volunteer Committee  
Sikh Heritage Museum of Canada  
Sikh.Museum.org  
Naomi Smith  
South Asian Visual Arts Centre  
St. Leonard's Place Peel  
Supportive Housing in Peel  
Toronto and Region Conservation Authority  
Town of Caledon  
Visual Arts Brampton  
Visual Arts Mississauga  
Cathy Willoughby  
World Sikh Organization

# 2015 DONORS

## **Archives Annual Campaign Project**

Diane Allengame  
Toronto Gore Historical  
Foundation Ebenezer  
Dale and Ann Ward

## **Archives Fund**

Anne Allengame  
Diane Allengame  
James and Judith Ann  
Anderson  
Eva Ardiel  
Charles H. Armstrong  
Heidi Bischof  
Aileen Bowyer  
Marty Brent  
Heather Broadbent  
Bartley and Ann Bull  
Jill Campbell  
Vera Cox  
Audrey Gilchrist  
Halton-Peel Branch Ontario  
Genealogical Society  
Jeannette Harrison  
Dayna Jablecki  
Retta James  
William and Jean Lawrence  
J.C. Letton  
Greg Purmal and Rosemary  
Mantini  
John and Denise Marques  
Chris and Nancy Moon  
Noreen Myers-Bailey  
Diana Plant  
Josie Premzell  
Dorothy Stewart  
Dale and Ann Ward  
Women's PROBUS Club of  
Caledon  
Darlene Wright  
And those who wish to remain  
anonymous

## **Art Gallery Fund**

Marty Brent  
Anita Verstraete

## **Creative Therapy Fund**

Friends of PAMA

## **PAMA Endowment Fund**

Heidi Bischof  
Estate of Joanne Bishop  
Aileen Bowyer  
Bartley and Ann Bull  
Kenneth Featherston  
Shanil and Amala Jayatilleke  
Dorothy Kew  
Fran Livingston  
Roy Marra  
Noreen Myers-Bailey  
Dianne Sutter  
Lewis Wagg  
Paul and Cathy Willoughby  
Preben and Annalise von  
Bulow  
Au Yeung, Yuen Ling  
And those who wish to remain  
anonymous

## **David Somers Works on Paper Endowment Fund**

Heidi Bischof  
Judy Daley and Peter  
Zevenhuizen  
John and Denise Marques  
Josie Premzell  
Lorna Somers  
Ron and Nancy Webb  
And those who wish to remain  
anonymous

## **Learning Fund**

Diane Allengame  
Kathleen Armitage  
Marty Brent  
Rowena Cooper  
Elaine Eigl  
Janine Elias Joukema  
Kenneth Featherston  
Erin Fernandes  
Annemarie Hagan  
Kevin Hickey and Anna  
Kucaba  
Jim Leonard and Sharon  
Wilcox

Gerrie Loveys  
Allison Mallen  
John and Denise Marques  
Nick Moreau  
Josie Premzell  
Mike and Zlata Proudlock  
John and Tanya Scott  
Joan Smith  
Pat Renouf  
Dale and Ann Ward  
Donna E. Young

## **Friends of PAMA**

Dr. Amritpal Pannu  
Sikh Foundation of Canada

## **General Fund**

Kathleen Armitage  
John Borkowski  
Michael Borkowski  
Roxanne and Bethany  
Campbell  
Carolyn Crawford  
Joan and John Doane  
Fran Livingston  
Lois Rice  
Ella Waters  
United Way of Greater Toronto

## **In Kind Donors to the Archives**

Kathleen Armitage  
Kathy Baker  
Robert Best  
Brampton Arts Council  
Brampton Guardian  
Brampton Library  
Violet May Bull  
Colin Cameron  
Robert Carnwell  
Paul Caulfield  
City of Toronto Archives  
Catherine Cookman  
Vera Cox  
Margaret Dobrzensky  
ERA Architects  
Eleanor Firth  
Jane Fraser  
Marion Gardiner



Audrey Gilchrist  
Lynn Golding  
Diane Gordon  
Rose Greene  
Grimsby Historical Society  
Archives  
Paul Hamilton  
Ross Hamilton  
Herb Heatley  
Pat Henderson  
Sonja Hidas  
Terri Leavens  
Helga Leith  
Valerie Mackie  
Merle Middlebrook  
Keith and Janice Moreau  
Nick Moreau  
Robin Mullett  
Peter Murphy  
Karen Pascal  
John Payne  
Peel Regional Police  
Bob Posliff  
Marnie Richards  
Bertha Robinson  
Sandra Rung  
Christopher Seaman  
Lorraine Smith  
Bruce South  
James Taylor  
Karen Thomas  
Lori Turner  
Lewis Wagg  
Ann Ward  
Carol Williams  
Zonta Club of Brampton and  
Caledon

### **In Kind Donors to the Art Gallery**

François Beauchamp  
François Constantin  
Michel Constantin  
Dave and Dale Cox  
Moshe Dobner  
+Ted Fullerton  
Guy Gagnon  
+Harold Klunder  
\*Richard Leibtag  
Tristann and David Lewis  
+Jennifer Long  
Richard Maitman

Paul Mascard  
\*Ron and Tabita Moore  
Al and Simmie Rain  
\*Jim and Denise Revine  
Angelika Sommer  
Barbara Steinberg  
\*Cultural Property  
+Gifts of the Artist  
Purchases:  
Monica Lacey  
Mike Cywink

### **In Kind Donors to the Museum**

Diane Allengame  
Kathleen Armitage  
Martha Barton  
Pierre Beaumier  
Sophia Borowski  
Brampton Arts Council  
Stephen Brown  
Robert Carnwell  
Ann Davidson  
Ruth Freeman  
Ann McClure Ford  
Rod Godden  
Diane Gordon  
Annemarie Hagan  
Chris Hall  
Paul Hamilton  
Nick Hudson  
Pat Kalapaca  
Terri Leavens  
Dolores Mishell  
Keith and Janice Moreau  
Nick Moreau  
Siba and Sarama Mukherjee  
Dale O'Hara  
Mabel Reive  
Gordon B. Robinson  
Bijoy Pan  
Mary Phalan  
Jim Taylor  
Valerie Pinard-Jain  
Neil Wigg  
Cathy and Paul Willoughby

### **Museum Funds**

Anne Allengame  
Diane Allengame  
James and Judith Ann Anderson

Eva Ardiel  
Charles H. Armstrong  
Aileen Bowyer  
Marty Brent  
Bartley and Ann Bull  
Jill Campbell  
Vera Cox  
Jeannette Harrison  
William and Jean  
Lawrence  
J.C. Letton  
John and Denise Marques  
Mississauga Quilters Guild  
Chris and Nancy Moon  
Diana Plant  
Josie Premzell  
Karen Teasdale  
Darlene Wright  
And those who wish to remain  
anonymous

### **Endowment Funds Benefiting PAMA**

Sir George Bull Fund  
John Cutruzzola Juried Show  
Endowment Fund  
Hugh and Mary Manning  
Heritage Fund  
David Somers Works on Paper  
Endowment Fund  
PAMA Endowment Fund  
Professor H.B. Symons –  
William Perkins Bull Fund

### **Grants**

Brampton and Caledon  
Community Foundation  
Ontario Arts Council  
PAMA Endowment Fund  
Province of Ontario, Ministry  
of Tourism, Culture and  
Sport, Community Museum  
Operating Grant  
Region of Peel  
Department of Canadian  
Heritage: Young Canada  
Works

### **Sponsors**

Sikh Foundation of Canada Inc.

# PAMA CELEBRATES

## Awards

Demonstrating leadership in the Culture Sector, PAMA has received a number of industry awards over the past year including:

2015 Ontario Museum Association Award of Excellence for Community Engagement, in recognition of PAMA's support of Sikh Heritage Month.

2015 Ontario Gudwaras Committee Award, in recognition for PAMA's support of Sikh Heritage Month.



Manager Marty Brent and Advisory Board member Gurratan Singh with the Gudwara Award.

## Accomplishments



### **Diane Allengame, Regional Archives Retired May 2015**

After nearly 30 years of dedicated public service as an archivist with the Region of Peel, Diane Allengame retired in May of 2015. Diane joined Peel's archival team in 1982 as a summer student, and through the years, with her strong work ethic, Diane rose steadily through the ranks, retiring as the Regional Archivist and Supervisor of Archival Services. Diane was also Acting Manager of PAMA for a number of years.

The archival program at PAMA owes an enormous debt to Diane – she played a pivotal role in the development and operation of the program, and was instrumental in terms of implementing policies and providing continuity of service, processing, arranging, and describing numerous 'foundational' collections, cultivating productive relationships with heritage staff in the member municipalities, and engaging Peel's community. She is an authority on the history of Peel, and her wealth of knowledge with regard to the community and the archival collection will be sorely missed.

# FRIENDS OF PAMA

The Friends of PAMA Advisory Board provides advice, fundraising and community representation for the Peel Art Gallery, Museum and Archives. Additionally, The Friends of PAMA provide:

- Funding for public education and outreach programs for the community
- Funding for lectures, workshops and exhibitions
- Support to build strong and effective links between PAMA and the community
- Fundraising for exhibitions and initiatives to augment and enhance the work of PAMA
- Election of an Advisory Board to advise upon operational policies and maintaining a charity in good standing following the best practices of the Canada Revenue Agency

## **Advisory Board Members:**

Bart Bull

Jill Crawford

Katherine Chung

Alex Dobo

Kevin Hickey

Roy Marra

Councillor Martin Medeiros

Chuck Scott, Chair

Gurratan Singh

Geoffrey Spinney

## **2015 PAMA STAFF:**

Karla Hale, Director of Service Innovation,  
Region of Peel

Marty Brent, Manager of the Peel Art Gallery,  
Museum and Archives

Diane Allengame

Ana Artes

Erin Black

Ruben Butillo-Escobar

Carmen Cadeau

Colin Cameron

Denyse Churchill

Maureen Couse

Kathryn Elliotson

David Farrell

Erin Fernandes

Chanice Gray

Natasha Gouveia

Jagadish Jakibanja

Annemarie Hagan

Jennilee Head

Sonja Hidas

Chrissy Howard

Glynnis Koloszar

Joseph Lammirato

Jim Leonard

Gerrie Loveys

Denise Marques

Lisa Mitrovic

Monika Moravan

Nick Moreau

Kyle Neill

Meena Pandit

Josie Premzell

Tanya Scott

Tom Smart

Samantha Thompson

Kevin Valbonese

Jane Venner

Angie Warner

Holly Wheatcroft

## **Students and Interns:**

Madeline Adamson

Alesha Grummett-Roesch

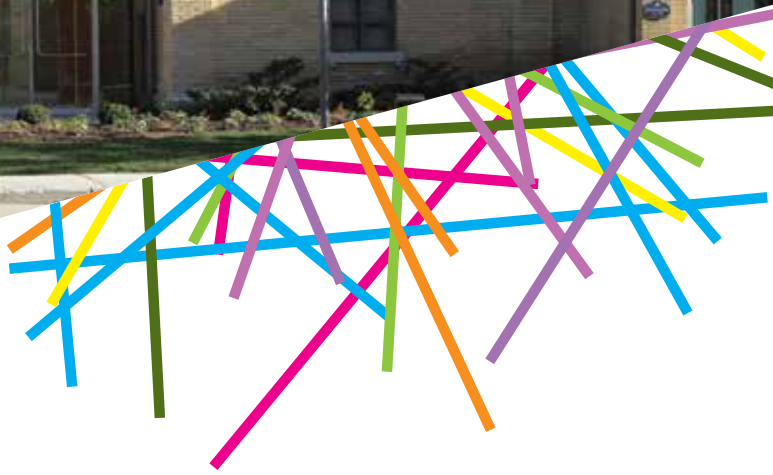
Annissa Malvoisin

Sean McInnis

Morgan Sutherland

Kristen Young

# PEEL ART GALLERY, MUSEUM AND ARCHIVES



9 Wellington St. E.,  
Brampton, ON L6W 1Y1  
905-791-4055 • [pama.peelregion.ca](http://pama.peelregion.ca)

 Region of Peel  
*Working for you*