

PEEL  
ART GALLERY  
MUSEUM +  
ARCHIVES

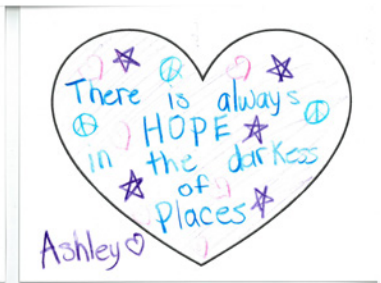


2018 YEAR IN REVIEW

# IN 2018, PAMA ASKED VISITORS TO CONTRIBUTE TO A HEART GARDEN

Visitors were invited to create a heart and add it to the Heart Garden in the exhibition *Caring Across Boundaries*, from the First Nations Child and Family Caring Society of Canada, at PAMA September 30, 2018 to January 6, 2019.

Each heart honours the memory of a child who was forced to attend Canada's Indian Residential Schools, which operated from the 1830s to 1996.



# TABLE OF CONTENTS

<b>Leadership Message</b>	<b>2</b>
<b>Culture and Heritage Matter</b>	<b>4-5</b>
We continued building a great collection with the help of donors like you	4
We celebrated the 50th anniversary of the museum and art gallery	4
We helped make connections	4
We helped promote healthy communities and environments	5
We had an amazing year because of your generosity	5
<b>Exhibitions</b>	<b>6-8</b>
Art Exhibitions	6
History Exhibitions	7
<b>Archives Program</b>	<b>9</b>
<b>Collection Highlights</b>	<b>10-13</b>
Archival Records	10
Art	11
Artifacts	12
<b>Learning at PAMA</b>	<b>14-17</b>
School Programs	15
Outreach in the Community	15
New in 2018	16
Community Programs	16
PAMA Visitor Comments	17
<b>Community Connections</b>	<b>18-20</b>
Exhibitions in the Community	18
Sikh Heritage Month	18
Sponsors and Partners	19
PAMA Members and Donors	20
PAMA Volunteers	20
<b>Community Partners and Co-Creators</b>	<b>21</b>
<b>2018 Donors</b>	<b>22-23</b>
<b>PAMA Milestones</b>	<b>24</b>
PAMA Remembers	24
Building Improvements	24
2018 Advisory Board	25
2018 PAMA Staff	25

# LEADERSHIP MESSAGE

In 2018, Peel Art Gallery, Museum and Archives turned 50! It was an incredible year of creativity and advancement for our ever-evolving innovative institution. Celebrating our 50th anniversary, our work with partners from across our diverse region took an inclusive and innovative look at our collective past, our dynamic present, and our aspirations for the future.

Our strong program of exhibitions and activities resonated with themes of truth and reconciliation, displacement and identity, inclusivity, and connections to lands we call home. We welcomed audiences to programs, workshops and talks. We launched events like PAMA Thursdays, our new after-hours arts events with live music, great food and drinks, and art making. We welcomed over 30,000 visitors to our campus and reached thousands more through outreach activities across the Region and through digital channels. We co-created with long-standing partners and new colleagues, reflecting voices, stories, and perspectives of our community and far beyond.

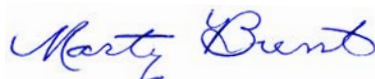
This year was one for creative approaches and thoughtful planning. We embarked on our strategic priorities with an exciting new operational structure and the addition of talented new staff. We honoured our mandate of connecting Peel residents of all ages and abilities through art, history, and culture. And, as the pages of our 2018 Year in Review illustrate, PAMA visitors shared what moved and inspired them, and why these experiences mattered.

Celebrating our 50th anniversary was a fabulous opportunity to reflect on the vision, leadership and drive that established and developed PAMA into the institution we are today. Our ever-evolving institutional achievements have been possible because of the support of those who share in the belief that art, history, and culture elevate our community's quality of life. We acknowledge with deep gratitude the Friends of PAMA Advisory Board, the donors, members, volunteers, and many organizations, funders, partners, and co-creators who enable PAMA to flourish and serve the residents of Peel.



**Karla Hale**

Director, Community Connections




**Marty Brent**

Manager, Peel Art Gallery, Museum and Archives



**Rene Nand**

Manager, Community Engagement and Visitor Experience



**Michelle Moore**

Chair

Friends of PAMA





Exhibitions at PAMA feature artists from the community and from around the world. In 2018, Amardeep Singh shared his powerful photographs in the exhibition *Lost Heritage: The Sikh Legacy in Pakistan*, sponsored by the Sikh Foundation of Canada.



The Peel Aboriginal Network hosts a monthly indigenous drumming circle at PAMA. On Indigenous Day 2018, drummers from around the world joined the circle.



Family Day is an opportunity for families to explore and connect while exploring exhibitions.

# CULTURE AND HERITAGE MATTER

## **We continued building a great collection with the help of donors like you**

Legacy gifts, in-kind donations and purchases contributed to PAMA's ability to share diverse stories through art, artifacts and documents.



Our annual event to celebrate donors, members and volunteers; Diane Allengame, Marty Brent, Emil and Beryle Kolb, Sean Baird.

## **We celebrated the 50th anniversary of the museum and art gallery**

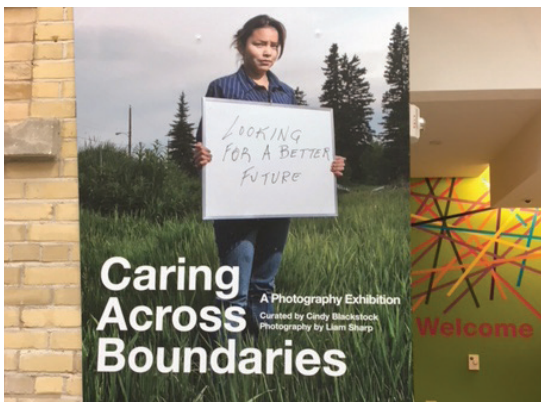
2018 was a year for celebration as the art gallery and museum celebrated 50 years. Remarkable support from volunteers, donors, community groups, staff, the County of Peel and the Region of Peel have helped PAMA evolve into one of Ontario and Canada's respected cultural hubs.



Joining the celebration were many former volunteers and staff. Bill Barber (Museum Curator 1976 – 1996) and Rowena Cooper (Archives Assistant 1987 – 2001) sharing stories from the past.

## **We helped make connections**

Truth and Reconciliation in museums and galleries engage all peoples across Canada. The *Caring Across Boundaries* exhibition helped to promote the well-being of Indigenous children and youth with words and images.



Caring Across Boundaries, ©Liam Sharp.

## We helped promote healthy communities and environments

Exhibitions at PAMA promoted care for the environment. *Space to Spoon* demonstrated how space technology benefits Canadian farmers, promoting sustainable agriculture.

*To What Degree? Canada in a Changing Climate* explored the complex topic of climate change through stories of people and ecosystems from across Canada: some hopeful, some disheartening, all true, and all happening right now. *Peel in a Changing Climate* highlighted the efforts of the Region of Peel, local conservation authorities and other organizations to adapt to and address the effects of climate change here at home.



Young visitors explore the exhibition *Space to Spoon*.

## We had an amazing year because of your generosity

Your support helps us showcase dynamic exhibitions, provide engaging experiences and increase access to great art and heritage. Thank You!



Guests joined artist Rupy C. Tut during her exhibition in the spring of 2018, for an inspiring conversation about her creative process.



# EXHIBITIONS

## Art Exhibitions

Art galleries are incubators of ideas. We present, through visual art, the thoughts, reactions, questions and statements put forward by artists to better understand the world around us. Present time converges with history to provide perspective and reflection on social, cultural and political events that shape our world.

In 2018, the Peel Art Gallery, as part of the PAMA campus, strove to engage with audiences through Heather Graham: *Reminds Me of M* and *Inuit Dolls From Past Traditions to New Expressions*. Paintings and drawings by Rupy C. Tut, in *A Journey Back Home* and *Lost Heritage: The Sikh Legacy in Pakistan*, which featured images by Amardeep Singh and allowed the institution to investigate Sikh art and heritage through the lens of personal and cultural identity. The photography installation *Regarding Space: Cynthia Greig and Vid Ingelevics* provided viewers with an opportunity to look at the museum, its spaces and how we, as a society, construct art historical narratives. The year concluded with the retrospective *Murray Laufer: More Than Skin Deep* and an exhibit of the permanent collection marking the 50th anniversary of the art gallery, *Art at PAMA: 50 Years of Collecting*.



*Inuit Dolls From Past Traditions to New Expressions*,  
February 3 to March 18



Artist Michael Awad with his work in the exhibition  
*Art at PAMA: 50 Years of Collecting*,  
October 20, 2018 – January 13, 2019





*Regarding Space: Cynthia Greig and Vid Ingelevics, July 19 to September 30*

## 2018 Art Exhibitions

*Meeting Her Majesty: Phil Richards' Official Portrait,*

November 4, 2017 – January 21, 2018

*The Kingston Prize: Canada's Portrait Competition,*

November 4, 2017 – January 21, 2018

*Through Gordon Rayner's Eyes: Portraits of Famous Artists,*

November 4, 2017 – January 21, 2018

*Heather Graham: Reminds Me of M,*

February 3 – March 18

*Inuit Dolls From Past Traditions to New Expressions,*

February 3 – March 18

*WORDS > PICTURES,*

January 27 – March 18

*Rupy C. Tut: A Journey Back Home,*

April 7 – July 2

*Lost Heritage: The Sikh Legacy in Pakistan,*

April 7 – July 2

*Regarding Space: Cynthia Greig and Vid Ingelevics,*

July 19 – September 30

*Art at PAMA: 50 Years of Collecting,*

October 20, 2018 – January 13, 2019

*Murray Laufer: More Than Skin Deep,*

October 20, 2018 – January 13, 2019

## History Exhibitions

Museums connect – they are dynamic cultural hubs, collecting, conserving and sharing historic and contemporary heritage with generations and communities. At PAMA and throughout the region, we focus on local and national issues and events shaped by global perspectives. Our exhibitions bridge history, culture, and creativity while offering interactive opportunities for fun and cultural understanding.

In 2018, PAMA's museum exhibits recognized challenges and opportunities across Peel region and beyond. We addressed current topics such as climate change, sustainable agriculture and social engagement (*Space to Spoon; To What Degree?*, *Canada in a Changing Climate; Remember/Resist/Redraw: Radical History Posters*), reconciliation and *Indigenous* youth (*Caring across Boundaries*) and Peel's unique voices and experiences (*War's End: Peel Stories of WWI, Black Enslavement in Upper Canada*). We also provided a creative, joyful space in Manning Square for children to explore the heritage and diversity of food through play (*What's for Dinner?*).

# EXHIBITIONS

## 2018 History Exhibitions

*I Spy: Christmas*, closed January 7, 2018

*I Spy: Winter*, January 12 – March 18, 2018

*150 Muslim Contributions to Canada*,  
closed January 21, 2018

*Blue God and the Serpents*,  
closed January 28, 2018

*Words to Pictures*, January 27 – March 18, 2018

*Beyond Sit and Stay: Dogs in Our Service*,  
February 10 – June 3, 2018

*I Spy: Spring*, March 23 – June 10, 2018

*Kaum Celebrating Contemporary Sikh Artists*,  
March 29 – April 29, 2018

*Black Enslavement in Upper Canada*,  
closed April 15, 2018

*PAMA Museum Collects: Spotlight on Stories*,  
April 26, 2018 – June 23, 2019

*Community Connections: Art from PAMA's  
Creative Expressions Program*,  
May 12 – July 22, 2018

*Space to Spoon; To What Degree? Canada in a  
Changing Climate / Peel in a Changing Climate*,  
June 16 – September 9, 2018

*Canadian Wildlife Photography of the Year*,  
July 1 – September 30, 2018

*Remember / Resist / Redraw: Radical History  
Posters*, August 2 – November 11, 2018

*Caring Across Boundaries*,  
September 29, 2018 – February 3, 2019

*Come on Canada! Selections from the  
Melhuish Collection of WWII Posters*,  
closed October 21, 2018

*Capturing the Moment*,  
November 29, 2018 – March 17, 2019

*PAMA Museum at 50*, November 3, 2018

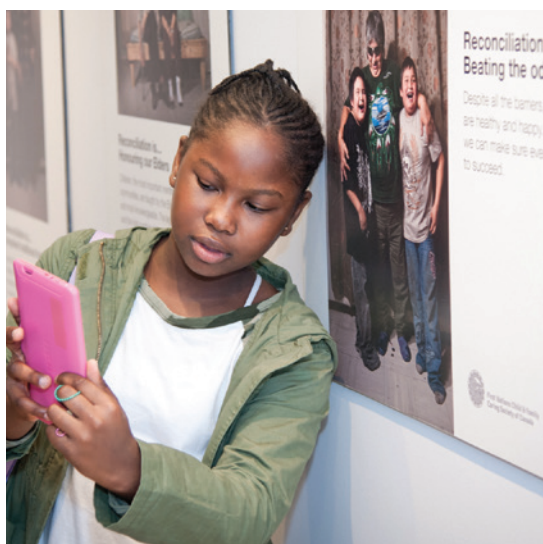
*War's End: Peel Stories of WWI*,  
November 10, 2018 – September 15, 2019

*What's for Dinner?* Throughout 2018

*Peel Through the Photographer's Lens*,  
throughout 2018



Visitors viewing *Capturing the Moment* exhibit in the PAMA Tunnel.



A student takes a selfie in the *Caring Across Boundaries* exhibition.

# ARCHIVES PROGRAM

The Region of Peel Archives helps enable open government as the official repository of archival records for the Region of Peel and the municipalities of Mississauga, Brampton and Caledon. The Archives also acquires important non-government records.

Reference services support the work of historians, consultants, genealogists, students and municipal staff and is a core function of PAMA's archives.



Finding aids help researchers discover information in archival records. A new detailed finding aid has been completed for the Hon. John McDermid fonds. Pat Carney, Minister for Trade, Prime Minister Brian Mulroney and John McDermid, Minister of State for International Trade, holding a copy of "*Trade: Securing Canada's Future*" the 1988 Canada-US Free Trade Agreement.

The Archives connects with the public through social media to encourage conversations about history and share information with a wide and diverse audience. The Peel Archives blog contributes to a wider understanding about the important work archives do and the value of our collection. More than 55 cultural institutions around the world have linked to it and the blog has been read and shared in over 180 countries.

A "Throwback Thursday" newspaper series was launched in 2018 for Metroland newspapers serving Mississauga and Brampton. The feature enhances public knowledge about Peel's rich history, PAMA's collections and programs.

To facilitate the Archives' readiness for a new collections database anticipated in 2019, a complete file-level inventory of our collection was launched. The inventory project has unearthed intriguing new discoveries and is capturing vital information about our collection.

Conservation is an important part of collections stewardship. In 2018, our conservation projects included the stabilization of glass plate photo negatives, the cleaning and storage of a hand-drawn Map of Peel County, and a rare 1873 cemetery plan of Caledon's Greenlaw Cemetery.

Reference services continued to thrive with a 39% increase in requests over 2017. This is an indication of community interest and value of accessible archival records.



Archives staff in one of our storage vaults working on the detailed inventory of our holdings.



# COLLECTION HIGHLIGHTS

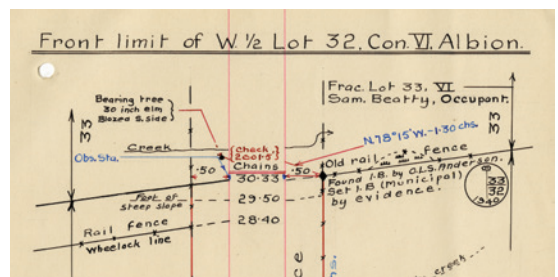
## Archival Records

In 2018, the Archives enhanced its stewardship role and research capacity through 103 acquisitions.

Significant groupings of municipal government records transferred include:

- Region of Peel Emergency Communications records documenting the establishment of the 911 system in Peel.
- Assorted maps, plans, slides and other material from the Canadiana Room, City of Mississauga.
- Assessment rolls from the Town of Caledon.
- Records of Gordon Graydon Memorial Secondary School, Mississauga.
- Former Township of Albion clerks' records transferred by Town of Caledon.
- Families and groups that will be available to the public. They include:
  - Dorothea Sheasby fonds, documenting the legacy of a prominent Mississauga woman active in the peace movement.
  - Original photographic print of Beatle John Lennon with his wife Yoko Ono arriving at Malton Airport, 1969.
  - Mayor Linda Jeffrey fonds.
  - Large display panel of assorted Brampton flood photographs from about 1950.

The Archives also continued to acquire important non-government records created by different organizations, individuals,



In 1940, Land Surveyor Frank Kitto produced an unusually varied and detailed report that included drawings, historical facts and the location of vegetation, hills, creeks, bridges and fences. Township of Albion, Clerk's records, Township of Albion fonds.



Rare postcard of the Dale Estate float being prepared for the Brampton Peace Day parade, July 19, 1919, to mark the end of World War One and celebrate the return of the men and women who served.



This postcard from about 1910 was acquired for the Peel Postcard Collection in 2018. It shows the A.G. Smith Photo Specialties Company in Streetsville engulfed in flames.

## Art

Art museum collections chronicle our social, cultural, political and creative paths through history. They are an integral aspect of our collective material culture as defined by artists. PAMA's art collection is part of a larger vibrant and diverse Canadian art historical narrative. In 2018 the art gallery added 25 works of art to PAMA's collection, 24 gifts and one commission to the institution. Works on paper – etchings, watercolours, drawings and photographs – dominated donations reflecting core strengths within PAMA's art collection. A commission, PAMA Courthouse, by Michael Awad, showcased the institution itself during an important Canadian milestone, its sesquicentennial year.

### 2018 Acquisitions

Artist Unknown, Portrait of Dr. Henry (Sandhill, Ontario), n.d.

Michael Awad, PAMA Courthouse, 2017  
chromogenic print, 1/3

Michael Awad, PAMA, View from the Cupola, 2017  
chromogenic print, 1/1

Wesley Bates, The Seeds 2003, Wood engraved  
print on paper

Rudolf Bickers, Portrait of John Sommer, pencil on  
paper, 2008

Gerard Brender a Brandis, Summer, Spring, Fall,  
wood engraving, 1987, 40/100

Yosef Drenters, Bear Skeleton 1992, Ink on paper

Yosef Drenters, Mother and Child, Mixed media  
sculpture; wood, cooper and lead, n.d

Cynthia Greig, Amardeep Singh/PAMA Brampton,  
Archival pigment print, edition 1/1, 2 Aps, 2018

Vid Ingelevics, PAMA 01, Peel Art Gallery, Museum  
and Archives, Brampton, Inkjet print, 2018

Louise LaRoche, Promised Land, monoprint, 2002

Georges Loranger, Chant De Nuit (Song of the  
Night), Mixed Media/Collage on Paper, 1958-9

John MacGregor, Untitled, Acrylic on thick paper,  
1991

Ray Mead, Untitled, 1990 oil on paper on canvas

Rolf Meyn, Gold, watercolour on paper, 1959

Rolf Meyn, Unknown, print, 1967

Rolf Meyn, Unknown, colour lithograph, 1975

Rolf Meyn, Vevouil, etching on paper, 1984

Paulette Murphy, Origins-Full Moon n.d., Mixed  
media with wood acrylic and bone

Frieda Nelson, Portrait of the Sculptor Yosef  
Drenters, photograph, 1968

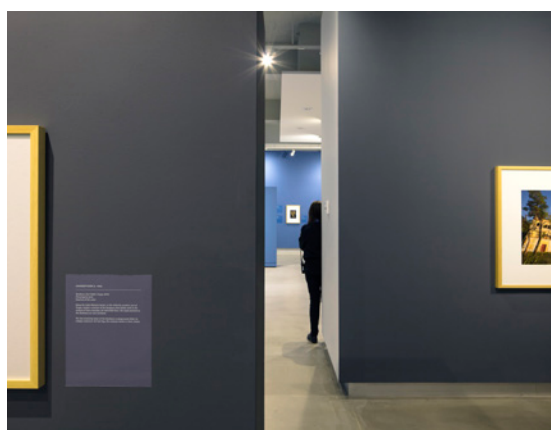
William John Bertram Newcombe, America, Mixed  
media on artist paper, Late 1940's-early 1950's

Harold Oswald Stacey, The Pink Farmhouse,  
Palgrave, Ont., oil on board, n.d.

David Urban, Amplifire: Lyre #3, 2010 oil on canvas

Florence Vale, Bride, acrylic on board, n.d.

Florence Vale, Sun Over Mountains, watercolour  
and ink on paper, 1977



Vid Ingelevics (Canadian, b. 1952), PAMA 01, Peel Art Gallery,  
Museum and Archives, Brampton, 2018, Inkjet print,  
50.8 x 64.75 cm, Peel Art Gallery, Museum and Archives,  
Gift of the artist, 2018, 2018.009.001, ©Vid Ingelevics, 2018.

# COLLECTION HIGHLIGHTS

## Artifacts

The Museum's collections are a tangible record of our region's history and current experience, held in trust for the public, and accessible through exhibitions and research. Objects give us a special kind of access to the past – they also offer unique insights into contemporary creativity, economics, industry and technologies. PAMA is deeply grateful for generous donations by all those recognizing the value of our shared heritage. Sometimes, it's the everyday objects and personal items which provide unexpectedly meaningful stories – like a child's homemade sled from the 1940s, or a pair of roller skates still in their original box, both donated this past year by Peel residents. New to our collection is a novelty radio, reminding us of the region's broadcast history and the 'all women' radio announcers at CHIC 790. These are only a few of the 285 new artifacts enriching our collection this year, each with their own stories illuminating individual lives and community experience.

In 2018, the museum collection received 164 artifacts from 24 accessions (groups of donations). Included in the donation were items in a focus area for collecting, Diversity, Activism and Inclusion:

- "CAW Pride" balloon, (Canadian Autoworkers LGBTQ programming)
- Brampton Environmental Association buttons, 1985
- Save our Trees and Streams Button; Credit River souvenir plate that SOTAS sold to raise funds for their legal defense



Novelty Radio shaped like a microphone, promoting CHIC 790 Brampton, which was billed as "the first all-female radio station," ca. 1960.



Home-made wooden sled, ca. 1947.





Visitors connect to PAMA's collections through curator talks and behind-the-scenes tours.

# LEARNING AT PAMA

PAMA offers programs designed to inspire and engage with audiences of all ages. 2018 was a year full of family events, summer camps, musical performances, artist and curator talks and drop-in activities. The education department delivered over 70

public programs and 340 school programs to over 15,000 participants. We partnered with a variety of groups to bring diverse programming to life both at PAMA and in the community at large.



Getting creative with natural materials during Family Day activities.





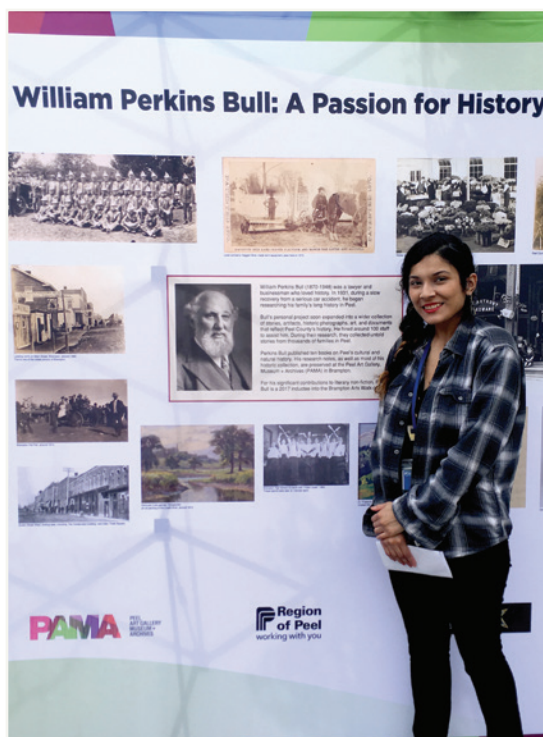
Students from kindergarten to grade 8 engaged with PAMA in unique and educational ways.

## School Programs

PAMA offers a variety of school programming that connects the school curriculum in history, social studies, visual arts, science, technology and language, to our collections. In 2018, over 6,900 students visited PAMA with their schools and an additional 1,386 took part in outreach programming.

## Outreach in the Community

PAMA outreach included events such as the Peel Children's Water Festival and Bollywood Monster Mashup reaching over 2,600 community members. PAMA educators delivered Museum Memories and Young at Heart programming to over 1,600 seniors in retirement residences and assisted living centres, giving participants the opportunity to join in shared experience and lifelong learning.



PAMA participates in community events throughout the year, Celerbrampton 2018.



# LEARNING AT PAMA

## New in 2018

Birthday parties for kids were introduced, giving families the opportunity to celebrate more milestones at PAMA. For adults, PAMA Thursdays offered a new way to engage with exhibitions and art for a 19+ audience.



Event attendees enjoying PAMA Thursday in October.

## Community Programs

The Creative Expressions program continues to provide a positive impact for people facing physical or developmental challenges. Since its inception in 2009, the Creative Expressions program has served over 3,000 participants.

In 2018, PAMA mounted an exhibition featuring the art and creative work of over 90 participants from over 15 organizations in the exhibition *Community Connections: Art from PAMA's Creative Expressions Program*. Over 5,000 visitors had the opportunity to view the exhibition during its 10 week run.

PAMA receives funding for Creative Expressions from the Pendle Fund at the Community Foundation of Mississauga and the Brampton and Caledon Community Foundation.



Participants at SNAPSO (Special Needs Adult Program Services Organization) create artworks and take pride in their abilities.



## PAMA Visitor Comments

---

*The art was cross-cultural and provided an interesting perspective.*

---

*The exhibits were very engrossing and informative. It was a pleasant surprise that admission was free during the month of April. Thank you.*

---

*The historical content of the Sikh exhibit was very interesting and surprising to learn.*

---

*I like learning about culture and world events, both exhibits were great. More of these different cultural shows would be wonderful.*

---

*The most memorable part of my trip was the art exhibit which were fabulous All the best! Way to go! I am from India, and it's my first visit to Canada.*

---

*My family is Native, so we loved this exhibit. Also loved that there were so many things for the children to interact with.*

---

*The flood of natural light and respectful conversation with staff and fellow patrons.*

---

*I did not know that Peel has preserved their history and heritage so well.*

---

*Canadian culture and wildlife exhibits were awesome! We would love to visit here again in future.*

# COMMUNITY CONNECTIONS

## Exhibitions in the Community

PAMA engages communities by providing exhibits to many locations across the region and beyond. In 2018, exhibitions were shared at key sites in Brampton, Caledon, Mississauga and at Queen's Park in Toronto.

## Sikh Heritage Month

Our partnership with the Sikh Heritage Month Committee contributes to creating events and programs. PAMA hosted four amazing weekends of programming exploring art, culture and heritage designed and hosted by the Committee. Exhibitions included Amardeep Singh's photography of spiritual and architectural remnants of a rich cultural legacy, Rupy C. Tut's calligraphy and painting interpreting popular Punjabi stories and a community-curated show of emerging artists.

## Outreach Exhibitions

*Highlight on Heritage,*  
February 10, 2018  
(Bramalea City Centre Mall)

*Peel 150,*  
closed March 16, 2018  
(Region of Peel Headquarters)

*What is your vision for the future of Peel and Canada?,*  
March 16 – September 21, 2018  
(Region of Peel Headquarters)

*Brampton Hockey,*  
March 6 – April 18,  
(Brampton City Hall)

*50 Years of Stories,*  
July 27 – January 7  
(Legislative Assembly of Ontario)

*Peel in a Changing Climate,*  
September 21, 2018 – February 8, 2019  
(Region of Peel Headquarters)



PAMA shares Peel heritage with the community during Highlight on Heritage Day at Bramalea City Centre.





Free admission during Sikh Heritage Month sponsored by the Sikh Foundation of Canada provides an opportunities for visitors to explore arts and culture.

## Sponsors and Partners

The Sikh Foundation of Canada sponsorship created valuable community engagement and fulfilled our vision of creating cohesive communities through art and heritage. Providing free admission to the community, over 3,500 visitors came to PAMA in April to explore and connect with heritage and culture.

In 2018, the sponsorship included the development of the exhibition *Lost Heritage; The Sikh Legacy in Pakistan* by Amardeep Singh. The photographs reflected Mr. Singh's deep connection to the land of his ancestors and to the legacy of Sikh art and architecture.



The visitors to PAMA who saw the exhibition were moved by the images and stories. Amardeep Singh (left) with Guest Curator B. S. Marwah (right).

# COMMUNITY CONNECTIONS



The Honourable Elizabeth Dowdeswell, Lieutenant Governor of Ontario, and Mr. William G. Davis, at the 50th anniversary celebration for the Art Gallery and Museum.

## **PAMA Members and Donors**

The membership program continues to grow and provide benefits to our members, while helping to support free admission days including Family Day and Culture Days. A portion of membership funds also support the *Creative Expressions* program, an initiative of the Friends of PAMA Advisory Board.

## **PAMA Volunteers**

Our dedicated volunteers continue to be the champions of PAMA. Volunteers sit on our Advisory Board, assist researchers in the Archives and Museum, help with collections, and are a friendly welcoming face at events. PAMA volunteers continually offer their support, passion and generosity. Thank you!

# COMMUNITY PARTNERS AND CO-CREATORS

## Thanks to our community partners

PAMA works with many community groups, organizations and individuals to plan exhibitions, education and public programs, and connect to the community. Our thanks to all our community partners.

Alzheimer Society of Peel	Ingenium – Canada Science and Technology Museum	Region of Peel, Environmental Education
Archives of Ontario	LAMP Community Health Network	Region of Peel, Grown in Peel Team, Integrated Planning Division, Corporate Services
Art Gallery of Ontario	Lorne Scots; Peel, Dufferin and Halton Regiment	Region of Peel, Learning in Our Neighbourhood
Brampton Folk Club	Lorne Scots Regimental Museum	Region of Peel, Public Health; Healthy Eating Team, Chronic Disease and Injury Prevention
Brampton Historical Society	McMaster University	Region of Peel, Public Works, Walk and Roll Peel, and Peel Water Festival
Brampton Library	Mississauga Library	Seneca College
Big Brothers Big Sisters of Peel	MonstrARTity Creative Community	Sikh Foundation of Canada
Boys and Girls Club of Peel	MuslimFest	Sikh Heritage Month Committee
Canadian Conservation Institute	Museums of Mississauga	St. John Ambulance, Peel Dufferin Branch
Canadian Museum of History	Peel Aboriginal Network	Stephen Bulger Gallery
Canadian Museum of Nature	Peel Data Centre Team, Information Management Division, Region of Peel – Service Innovation, Information and Technology	Stephen Lewis Secondary School
Canadian War Museum	Peel District School Board	Therapeutic Paws
Caledon Library	Peel Regional Police	Toronto and Region Conservation Authority
City of Brampton	Private Collectors	
Credit Valley Conservation	Region of Peel, Office of Climate Change and Energy Management	
Dufferin-Peel Catholic District School Board	Region of Peel, Early Literacy Specialist, Human Services	
Ecosource		
First Nations Child and Family Caring Society		
FOLD Literary Festival		
Graphic History Collective		
Halton Region Heritage Services		
Ingenium – Canada Agriculture and Food Museum		



# 2018 DONORS

## **Annual Campaign Donors**

Janis Alton  
James and Judith Ann Anderson  
Kathleen Armitage  
Hazel Ellen Page Bentley  
Heidi Bischof  
Lis Braun  
Marty Brent  
Heather Broadbent  
Jill Campbell  
Judy Daley  
Gangadhar and Nisha Deshpande  
J.C. Letton  
Rhona Lindo  
Darrin Martens  
Matthew Meagher  
Peter and Paulette Murphy  
Nancy Perrin  
Josie Premzell  
Greg Purmal and Rosemary Mantini  
Lois Rice  
Karen Teasdale  
Ian Thom  
Anita Verstraete  
Dale and Ann Ward  
Paul and Cathy Willoughby

## **Archives In-Kind Donations**

J. Roy Allen  
Janis Alton  
Eva Ardiel  
Kathleen Armitage  
Allan J. Bauldry  
Elizabeth Berry  
Traci Boyd  
Robert Carnwell  
Steve Collie  
Elaine Cuthbert  
Moir Dryborough  
Ross Fair  
Sue Fernane

Eleanor Firth  
Teri Freeman  
Arthur James Gordon  
Joseph Gray  
Ken Harrison  
John Heddle  
Rick and Arlene Henry  
Linda Hicks  
Liz Hoellstern  
William Hutton  
Jim Low  
Milly Martin  
Lorna Mays  
John McDermid  
Merle Middlebrook  
Moreau Family  
Dan O'Reilly  
Anthony Percival  
Mary Lou Proctor  
Donna Revell  
Marion Russell  
Peggy Savage  
Dorothea Sheasby  
Judith Robinson Snider  
Lorne Stanley  
Samantha Thompson  
Herb Van Arkel  
Lynda Voegtle  
Cindy Ward-Jasinski  
Catherine Wells  
Paul Willoughby  
Elizabeth Zammit

## **Archives Transfers**

City of Mississauga  
City of Brampton  
Town of Caledon  
Peel District School Board

## **Artist Donors**

Cynthia Greig  
Vid Ingelevics

### **Art Gallery In-Kind Donations**

Donald Ball  
Michel Constantin  
Moshe Dobner  
Judith Edwards  
Guy Gagnon  
Cynthia Greig  
Chuck Havill  
Rick and Arlene Henry  
Vid Ingelevics  
Peter Milligan  
Jim Reid and Peggy Taylor-Reid  
Michael Smith  
John and Gisela Somer  
Gisela Somer  
Richard Sturm  
Ian Thom

### **PAMA Endowment Fund**

Heidi Bischof  
Kenneth Featherston  
Jeannette Harrison  
Antonette Smith  
Preben and Annalise von Bulow

### **David Somers Works on Paper Endowment Fund**

Heidi Bischof  
Marty Brent  
Judy Daley  
Josie Premzell  
Lorna Somers  
Ron and Nancy Webb  
To those who wish to remain anonymous,  
thank you

### **Learning Fund**

Rennan Isaacs  
Dale and Ann Ward  
Women's PROBUS Club of Caledon

### **Museum In-Kind Donations**

Anne Allengame  
Kathleen Armitage  
Robert Carnwell  
Sue Fernane  
Ruth Freeman  
Leona Gladys Goodfellow  
Milly Martin  
Nick Moreau  
Joan Russell  
Marion V. Russell  
Peggy Savage  
Chuck Scott  
Winston Uytenbogaart  
Catherine Wells

### **Endowments and Funds Benefiting PAMA**

Sir George Bull Fund  
John Cutruzzola Juried Show  
Endowment Fund  
Hugh and Mary Manning Heritage Fund  
David Somers Works on Paper  
Endowment Fund  
PAMA Endowment Fund  
Professor Thomas H.B. Symons  
– William Perkins Bull Fund

### **Grants**

Brampton and Caledon Community  
Foundation  
Department of Canadian Heritage:  
Young Canada Works Summer Program  
Pendle Fund at the Community Foundation  
of Mississauga  
PAMA Endowment Fund  
Province of Ontario, Ministry of Tourism,  
Culture and Sport, Community Museum  
Operating Grant  
Region of Peel

### **Sponsors**

Sikh Foundation of Canada

# PAMA MILESTONES

## PAMA Remembers



John and Gisela outside of the Peel Art Gallery, Museum and Archives

PAMA and the Halton Hills community lost long-time arts supporter John Sommer, at age 90 in 2018. A resident of Georgetown for over six decades, John, along with his wife Gisela, operated Gallery House Sol from their Charles Street home for nearly 40 years. John was passionate about the arts and its role in enriching our lives. Since 1997, John and Gisela Sommer donated hundreds of works from their personal art collection which have enriched the PAMA collection.

## Building Improvements in 2018

As part of the Region of Peel and PAMA's ongoing commitment to continually improve our unique heritage facility and its place in our community, PAMA undertook the repair and restoration of the Courtroom railings and the installation of interior storm windows on the main level of the 1867 Courthouse. These projects benefit staff and visitors as they improve accessibility and comfort and extend the life of our heritage facility.



Kent Gillespie, retired Region of Peel Commissioner, David Szwarc, Region of Peel CAO, and Katherine Chung, Vice-Chair, PAMA Advisory Board look over an archival record.



# PAMA STAFF AND SUPPORTERS

**The Friends of PAMA** provide input, advocacy in the community, seek funding opportunities, volunteer and assist with PAMA public events.

The Friends of PAMA:

- Provide funding for exhibitions, public education and outreach initiatives for the community
- Build strong and effective links between PAMA and the community
- Act as an Advisory Board to advise on operational policies and maintaining a charity in good standing following the best practices of the Canada Revenue Agency

## 2018 Advisory Board

Gagan Battu  
Mila Bezpala-Brown  
Katherine Chung, Vice Chair  
Brian Ellul, Treasurer  
Kevin Hickey  
Kate Lamb  
Councillor Martin Medeiros  
Roy Marra  
Peter Marrello  
Michelle Moore, Chair  
Gregory Peddie  
Chuck Scott, Outgoing Chair  
Gurnishan Singh  
Gurratan Singh  
Steven J. Wong

## 2018 PAMA STAFF

Karla Hale, Director, Community Connections  
Marty Brent, Manager, Peel Art Gallery, Museum and Archives  
Rene Nand, Manager, Community Engagement and Visitor Experience

Sharona Adamowicz-Clements	Kyle Neill
Caitlin Ammendolia	Jennifer Olohan
Neelam Auluck	Meena Pandit
Erin Black	Amber Passalidis
Elsbeth Callaghan	Ayesha Patel
Colin Cameron	Frances Pereira-Jardine
Kendra Campbell	Ann Pennicooke
Denyse Churchill	Sabrina Podai
Araya Clarke-LaRose	Indira Poonow
Maureen Couse	Josie Premzell
Astrid D'Lima	Farrukh Rafiq
Patricka DelPratt	Anjanie Ramlogan
Joan Doane	Lorraine Raymer-Highmore
David Farrell	Kristy Romita
Erin Fernandes	Lara Salami
Veronica Ferreira	Simonette Seon-Milette
Chanice Gray	Helen Snow
Manprit Gill	Melissa Sousa
Greg Ivany	Samantha Thompson
Michelle Jaelin	Kevin Valbonese
Jagadish Jakibanja	Amanda Vecchi
Jacob Keszei	Angie Warner
Carrie Kitzul	Stephanie Wu
Annemarie Hagan	Amanda Vecchi
Lauren Herzog	Angie Warner
Chrissy Howard	Stephanie Wu
Rachel Leaton	Michelle Zogheib
Jim Leonard	
Patricia Madore	
Darrin Martens	
Denise Marques	
Rosalie McCurdy	
Sidney Miller	
Monika Moravan	
Nick Moreau	

## Summer Students and Interns:

Veronica Ferreira  
Sydney  
Kimber-Johnson

# PEEL ART GALLERY, MUSEUM AND ARCHIVES



9 Wellington St. E., Brampton, ON L6W 1Y1 • 905-791-4055 • [pama.peelregion.ca](http://pama.peelregion.ca)



30% Total Recycled Fiber



PERMANENT

PHC-0129 19/05